

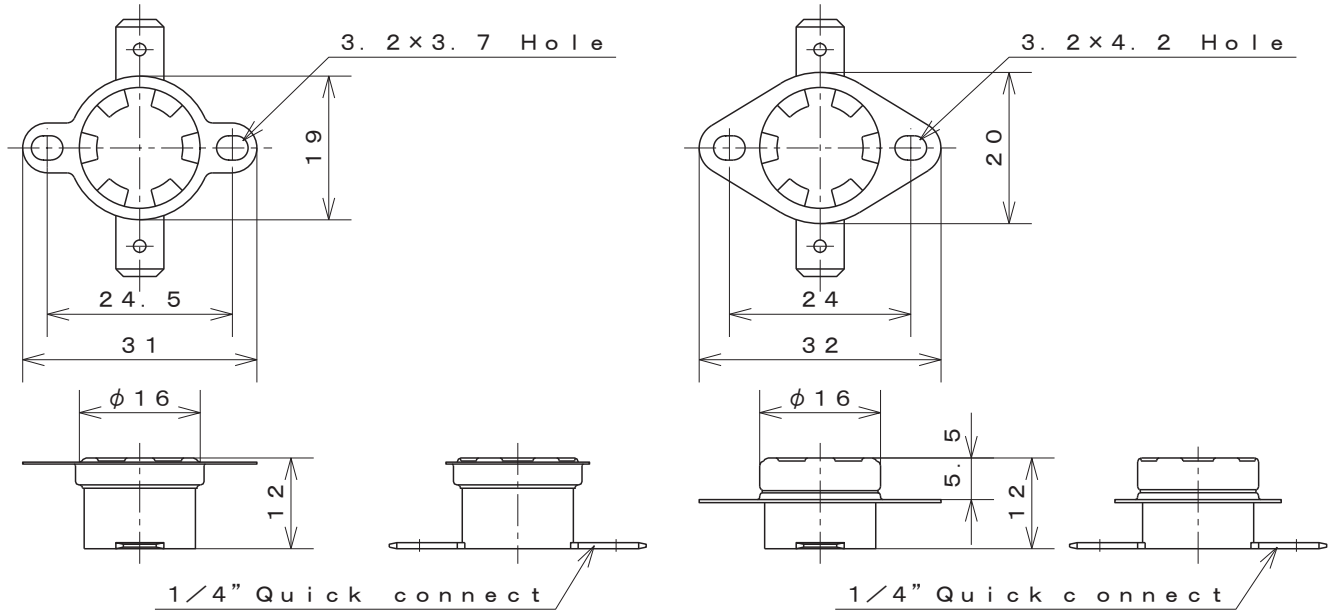


# 1/2" Disc Type Thermostat Automatic Reset

## Type 21EN

UL·C·UR·VDE  
Recognized

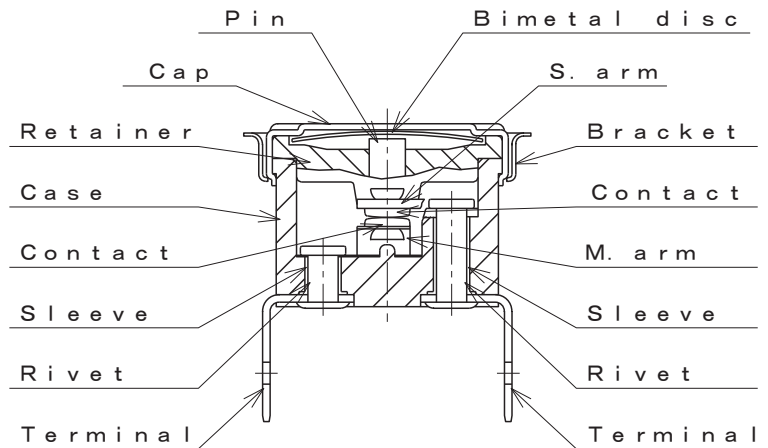
### Dimensions



### Materials of parts

| Part      | Material               |
|-----------|------------------------|
| Cap       | Aluminum               |
|           | Copper                 |
|           | Stainless steel        |
| Case      | Phenolic resin         |
| M.arm     | Beryllium Copper alloy |
| Terminals | Brass                  |
| Bracket   | Stainless steel        |
| Contacts  | Silver-Nickel alloy    |

### Structure



### Specification

| Item                     | Specification   |
|--------------------------|---|
| 1. Basic features        | SPST Automatic reset  |
| 2. Operation             | A : Contacts open on temperature rise<br>B : Contacts close on temperature rise |
| 3. Electrical rating     | AC250V/16A 10,000 cycles VDE:AC250V/10A 100,000 cycles                          |
| 4. Calibration method    | Hot & cold air circulation system   |
| 5. Temperature rating    | Operating temperature Max. 180°C  |
| 6. Insulation resistance | Not less than 1,000MΩ/DC500V  |
| 7. Dielectric strength   | Not less than AC1,500V/1min. or AC1,800V/1sec.                                  |

### Standard

UL 873, C-UR                      UL File                      No. E43273  
DIN EN 60730-1, -2-9 VDE Licence                      No. 100896, 40004992

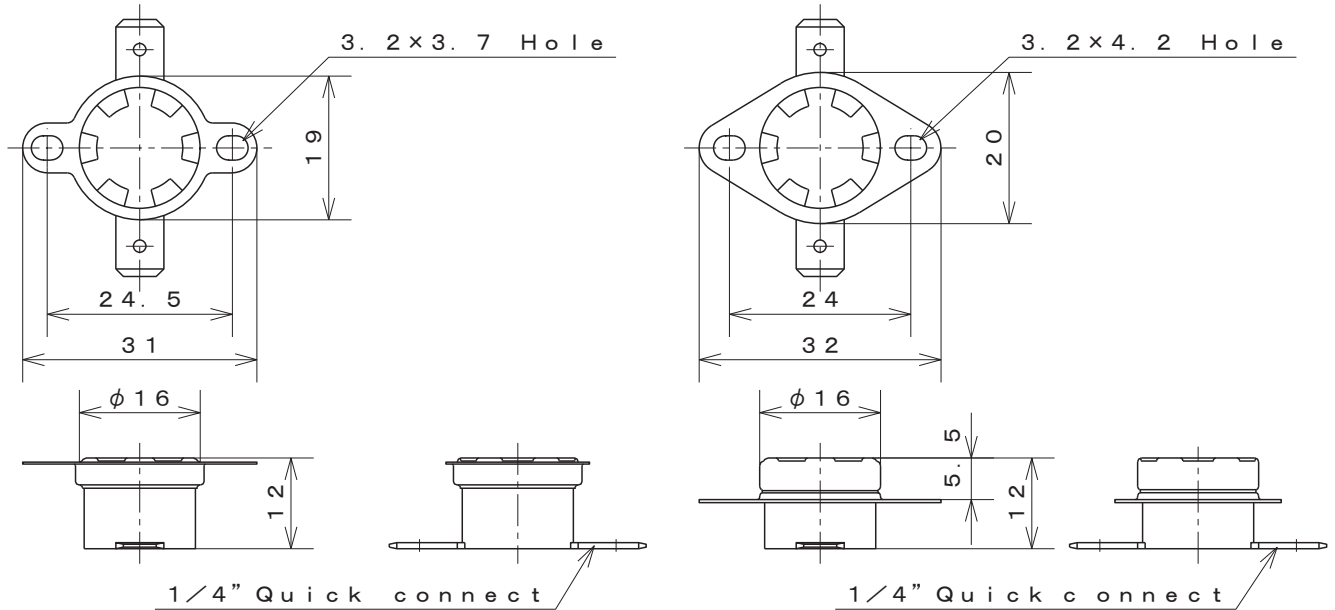


1/2" Disc Type Thermostat  
Automatic Reset

Type **21EP**

UL·C·UR·VDE  
Recognized

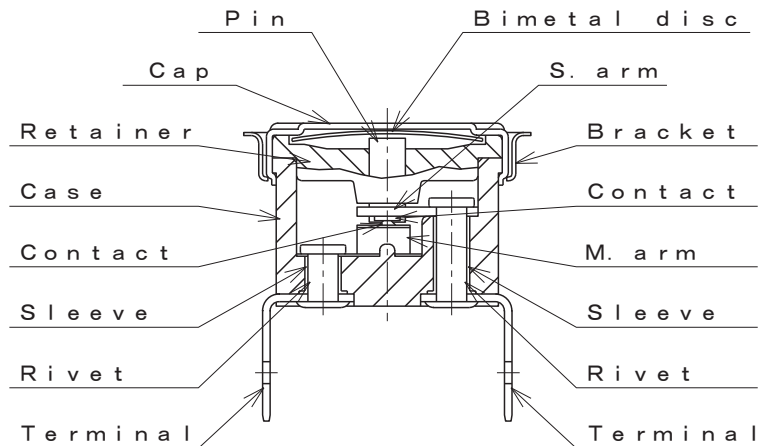
Dimensions



Materials of parts

| Part      | Material                              |
|-----------|---------------------------------------|
| Cap       | Aluminum<br>Copper<br>Stainless steel |
| Case      | Phenolic resin                        |
| M.arm     | Beryllium Copper alloy                |
| Terminals | Brass                                 |
| Bracket   | Stainless steel                       |
| Contacts  | PGS-Crossbar                          |

Structure



Specification

| Item                     | Specification   |
|--------------------------|---|
| 1. Basic features        | SPST Automatic reset  |
| 2. Operation             | A : Contacts open on temperature rise<br>B : Contacts close on temperature rise |
| 3. Electrical rating     | AC250V/0.2A DC42V/0.2A 100,000 cycles   |
| 4. Calibration method    | Hot & cold air circulation system   |
| 5. Temperature rating    | Operating temperature Max. 180°C  |
| 6. Insulation resistance | Not less than 1,000MΩ/DC500V  |
| 7. Dielectric strength   | Not less than AC1,500V/1min. or AC1,800V/1sec.                                  |

Standard

UL 873, C-UR                      UL File                      No. E43273  
DIN EN 60730-1, -2-9 VDE Licence                      No. 100896, 40004992